



MS3-W1
Wireless No Cable

Features:

- 500 PIN / card users
- PIN length: 4~8 digits
- Communication distance: 15m Max
- Pulse mode, toggle mode
- Tri-color LED status display
- Ultra low power consumption (wireless keypad<10uA, Wireless Exit Button: <10uA)
- Supports integrate 2 keypads, or 1 keypad and 1 exit button. Standard package is controller + keypad + wireless exit button.

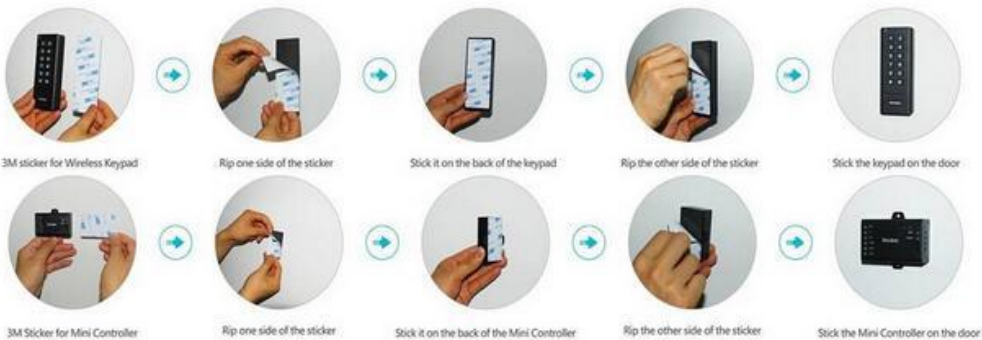
Technical Specification:

<p>User Capacity</p> <p>PIN Length</p> <p>Card Type</p>	<p>500</p> <p>4~8 Digits</p> <p>125KHz EM Card</p>
<p>Operating Voltage</p> <p>Wireless Keypad</p> <p>Mini Controller</p> <p>Wireless Exit Button</p>	<p>3units of AAA batteries</p> <p>12V DC</p> <p>2023 Lithium battery</p>
<p>Current</p> <p>Idle Current</p> <p>Working Current</p>	<p>Wireless Keypad: <10uA</p> <p>Mini Controller: <20Ma</p> <p>Wireless Exit Button: <10uA</p> <p>Wireless Keypad: <20mA;</p> <p>Mini Controller: <40mA</p> <p>Wireless Exit Button: <10uA</p>
<p>Communication Frequency</p>	<p>2.4G</p>
<p>Communication Distance</p>	<p>15m Maximum</p>

Relay Contact Load	2Amp Maximum
Environment Operating Temperature Operating Humidity	Indoor -20°C~60°C(-4°F~140°F) 0%~86%RH
Physical Dimensions Unit Weight Shipping Weight	ABS Shell Wireless Keypad: L135 x W54 x D19(mm) Mini Controller: L65 x W54 x D19(mm) Wireless Exit Button: L83 x W40 x D16(mm) Wireless Keypad: 100g Mini Controller: 50g Wireless Exit Button:35g 220g



It can be install within 3 Minutes.
How could we do it?
Please check below:



You can see:

- The device is Wireless keypad access control kit, do not need drill hole for wire through the door.
- The device packed with 3M double-side Sticker, can easily stick the Wireless Keypad and Mini Controller on Metal door, Glass Door, Wooden Door, or Smooth Wall.